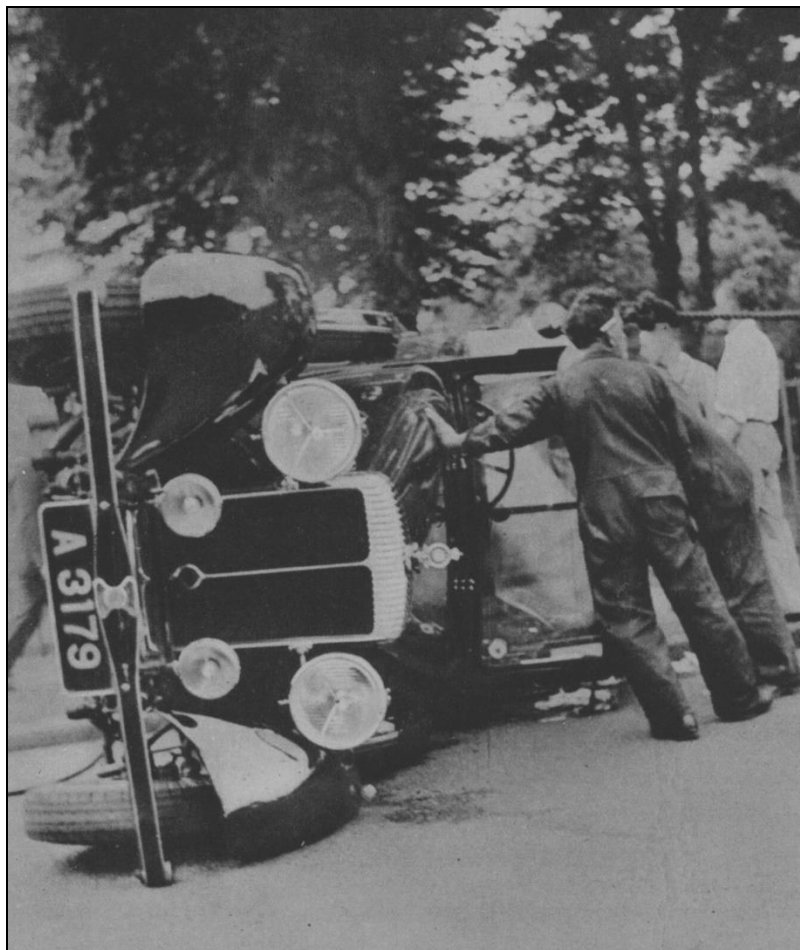


Wandsworth Historical Society

Wandsworth Historian no. 107

Spring 2019



Queen Mary's limousine lying on its side in Wimbledon Park Road in May 1939. (Keystone)

A dreadful railway crash at Clapham Junction in 1892, the social battles of Alfred Dryden, a notable resident in Victorian Putney, and the undignified moment when the Queen's grandmother, Queen Mary, ended up on Wimbledon Park Road in an overturned car. These are the main features in the latest *Wandsworth Historian*. Other items focus on a restored Regency ice-house at Burntwood School and a glimpse into the marketing activities of the Wandsworth ironmonger, H. R. Mopsey.

The *Wandsworth Historian* (ISSN 1751-9225) is published by the Wandsworth Historical Society, and copies are available price £3.00 plus £1.50 for P&P from Neil Robson, 119 Heythorp Street, London SW18 5BT or by emailing 020neil119@gmail.com. Please make cheques payable to the 'Wandsworth Historical Society'. On-line payment also accepted.

The website address of the Wandsworth Historical Society is www.wandsworthhistory.org.uk.